

Introduction to ISO 38200 Chain of Custody of wood and wood-based products

Prof. Dr. Michael Köhl
Universität Hamburg

Institut für Holzwissenschaft - Weltforstwirtschaft & Centrum für Erdsystemforschung und Nachhaltigkeit

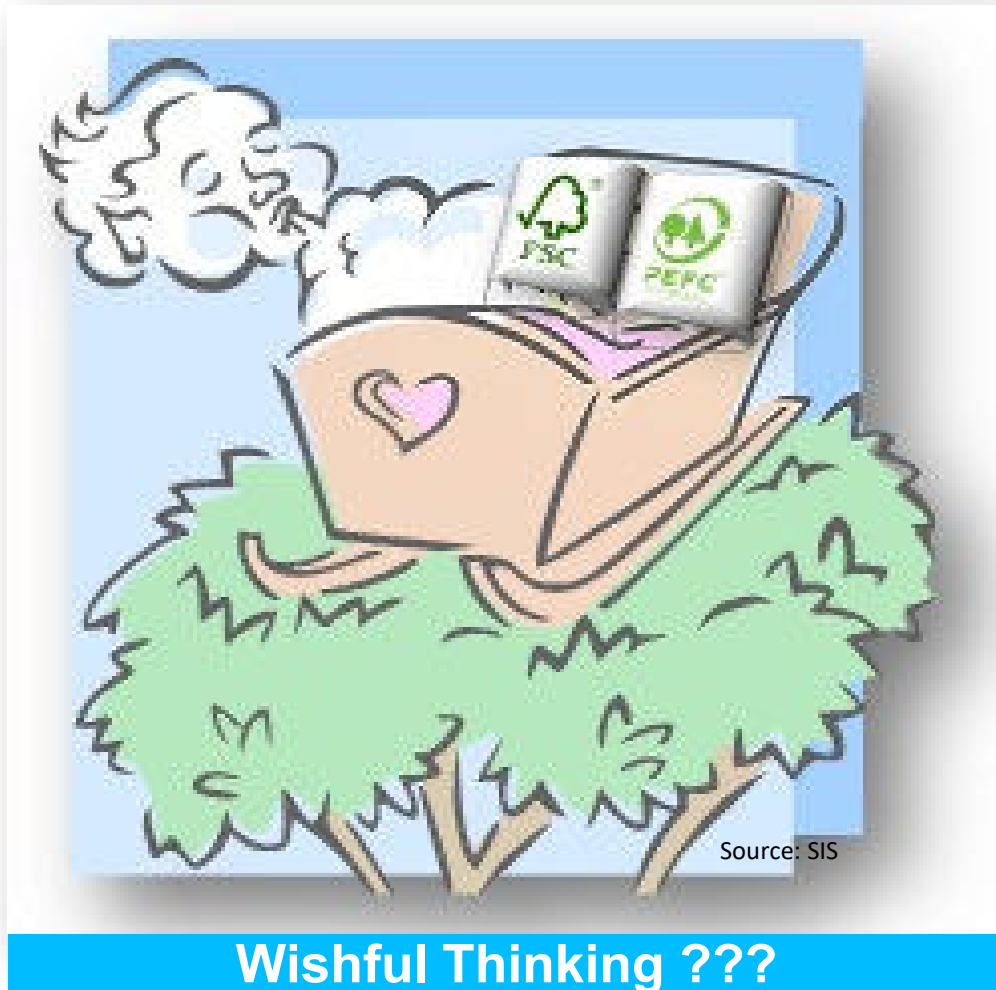
Marcus Kirschner

Bundesverband Holzpackmittel, Paletten, Exportverpackung (HPE) e.V.

Magnus Deinzer

Stora Enso Paper GmbH

ISO 38200 Chain of Custody






Joint Statement by the Forest Stewardship Council (FSC) and the Programme for the Endorsement of Forest Certification (PEFC) recommending ISO members to vote against the New work item proposal Chain of Custody of Forest Based Products – Requirements

Forest certification arose in response to concerns about the preservation of the world's forests. It developed as a result of the 1992 UN Earth Summit in Rio, which defined "sustainable development" as a common goal of human development.

Two global forest certification systems have emerged in the past twenty years, the Programme for the Endorsement of Forest Certification (PEFC) and the Forest Stewardship Council (FSC). Together, FSC and PEFC account for some 98% of the world's certified forests and chain of custody certificates.

With this statement, FSC and PEFC wish to express their sustained opposition to the New work item proposal Chain of Custody of Forest Based Products – Requirements and recommend ISO Member Bodies to vote against the new work item proposal.

Both PEFC and FSC strongly believe that an ISO chain of custody standard would not add value to global efforts to promote sustainable forest management through forest certification. The existing chain of custody standards by FSC and PEFC are already widely accepted, with more than 35.000 certificates in existence today, supporting, in 2012, about 27% of global roundwood production¹.

The fundamental principles of PEFC and FSC chain of custody certification are closely aligned, allowing companies to obtain dual certification to both FSC and PEFC in an efficient and straightforward manner at minimal additional costs. PEFC and FSC have a long history in multi-stakeholder chain of custody standards development to meet the ever evolving expectations of all stakeholders along the value chain. The strengths of FSC and PEFC in offering sustainable forest management certification, in addition to chain of custody certification, cannot be underestimated as this creates synergies that ensure complementarity of these two elements. A separated chain of custody delivered by another institution such as ISO cannot deliver similar synergies and will lead to uncertainty due to its dislocated nature with respect to forest management certification. Dividing the supply and production chains results in sub optimal results.

PEFC and FSC are both committed to working with stakeholders to identify and, where possible and relevant, remove differences between the two chain of custody systems. Given this, the added value that an ISO chain of custody can offer is highly questionable.

Both PEFC and FSC appreciate and benefit from the excellent work of ISO and its member bodies, however for the purpose of Chain of Custody of Forest Based Products, we urge you to vote against the proposal.

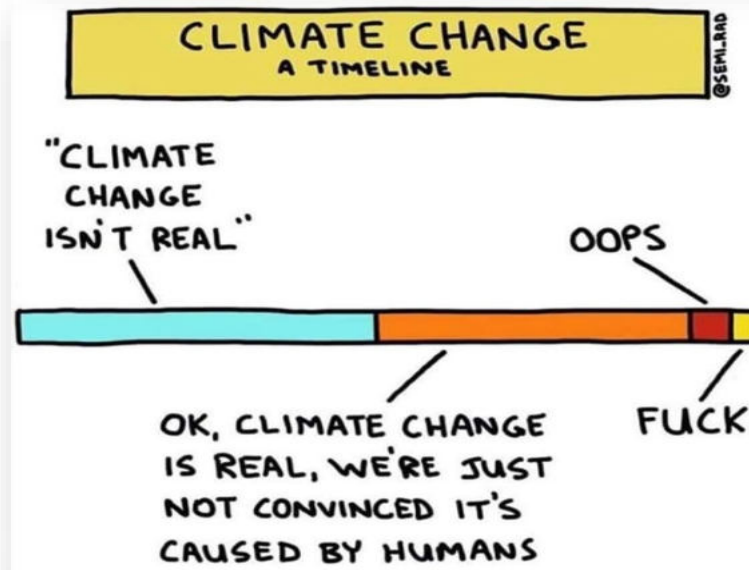

 Kim Carstensen
 Director General, FSC


 Ben Gunneberg
 Secretary General, PEFC

Joint Statement FSC/PEFC 07/2013



Shealah Craighead
<https://www.whitehouse.gov/people/donald-j-trump/> (archive)





Bäume gepflanzt

1.000 Mrd.

Zum Baumzähler

MITMACHEN

INFORMIEREN

UNTERSTÜTZEN

SPENDEN

ZUM SHOP

Code einlösen >

Heilpflanze gegen Klimakrise entdeckt: Der Baum.

#Beleait

Mehr Infos >

Glaub an Bäume.
Unterstütz unsere Kampagne.


European Commission

Home > Strategy > Priorities 2019-2024 > A European Green Deal

A European Green Deal


European Commission

Environment

Home > Strategy > Biodiversity strategy for 2030

Biodiversity strategy for 2030


European Commission

Environment

Home > Strategy > Forest strategy

New EU forest strategy for 2030


European Commission

Law

Deforestation and forest degradation


EUROPEAN COMMISSION

Brussels, 17.11.2021
COM(2021) 706 final
2021/0366 (COD)

Proposal for a

REGULATION OF THE EUROPEAN PARLIAMENT AND OF THE COUNCIL

on the making available on the Union market as well as export from the Union of certain commodities and products associated with deforestation and forest degradation and repealing Regulation (EU) No 995/2010


European Commission

Biodiversity: deforestation-free products on the EU market

17 November 2021 #EUGreenDeal


 "Trees and forests are true allies in the fight against the climate and biodiversity crises. Trees purify our air, cool our cities, and take up CO2. We need to be their allies too. Our deforestation regulation answers citizens' calls to minimize the European contribution to deforestation and to


 "We must protect biodiversity and fight climate change not only in the EU, but globally, and our consumption should not contribute to global deforestation which is a major cause of biodiversity loss and greenhouse gas emissions. Thus we present the most ambitious legislative measure ever put forward by any country anywhere in the world to curb deforestation

Products covered by anti-deforestation rules

Soy, Coffee, Cocoa, Wood, Palmoil, Beef

How will the Regulation work?

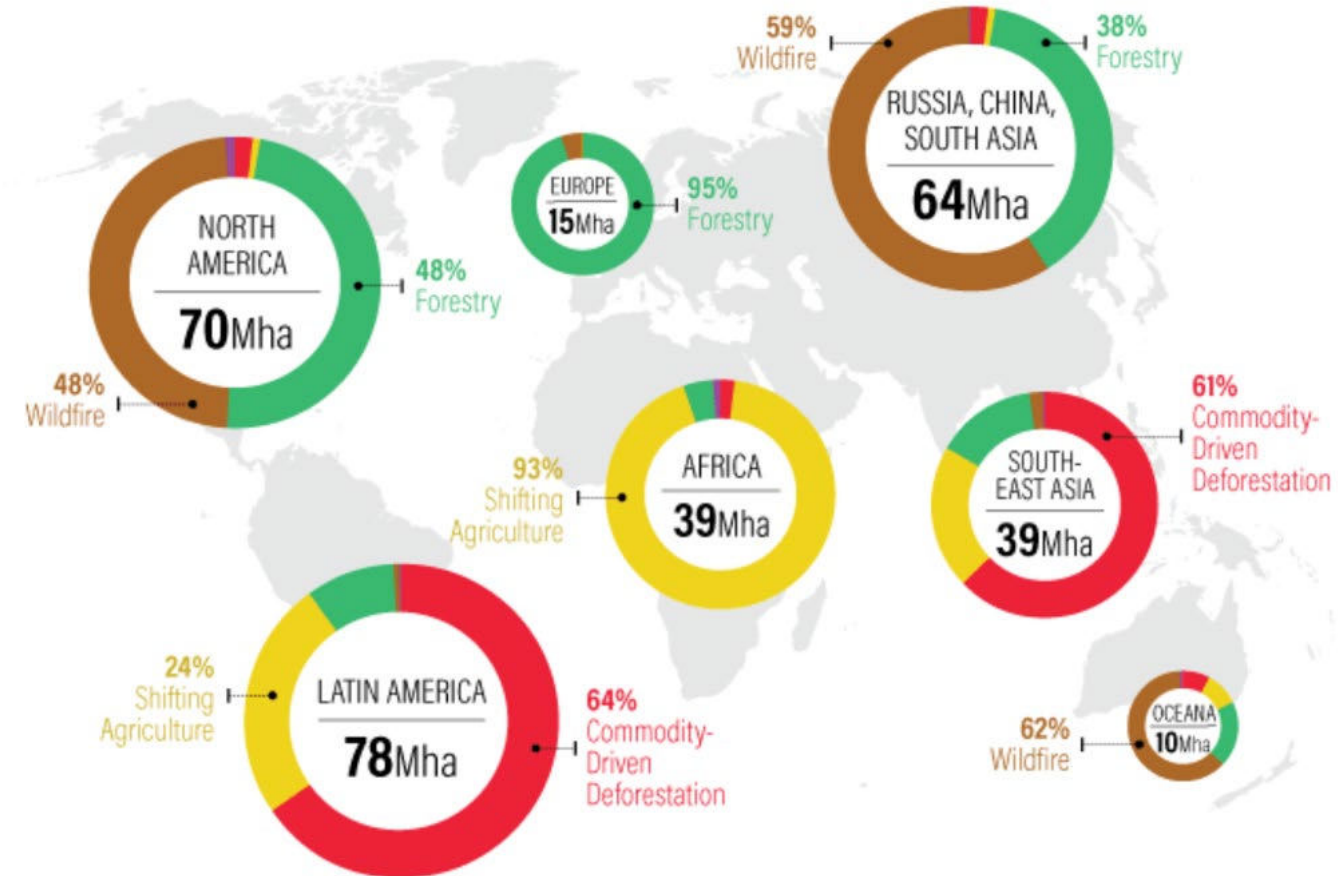
- Companies confirm to national authorities that the products they place on the EU market follow the EU rules.
- Member State authorities will have **access to relevant information** on the commodities and products, such as geographic coordinates and country of production, through a **digital system**.
- Anonymised data of this system will be available to the wider public in order to foster **transparency**.
- A **country benchmarking system** conducted by the Commission will **determine the risk** of deforestation.

Member States' competent authorities will:

Companies placing products on the EU market will:

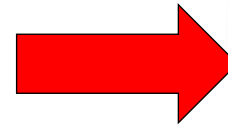
- Collect relevant information about commodities and products to ensure they have **not been produced on land deforested or degraded after 31 December 2020**.
- Exercise **mandatory due diligence** and analyse and evaluate risks in their supply chain.
- Take adequate and proportionate **mitigation measures**, such as using satellite monitoring tools, field audits, capacity building of suppliers or isotope testing to check the **origin of the product**.

Deforestation-free Supply Chains



- Annual deforestation: 8.8 Mio. ha
- 80 percent due to conversion to agricultural land

Deforestation associated with international trade



https://wwfeu.awsassets.panda.org/downloads/stepping_up___the_continuing_impact_of_eu_consumption_on_nature_worldwide_execsummary.pdf

Deforestation assoiated with international trade



China	24%
EU	16%
India	9%
USA	7%
Japan	7%

https://wwfeu.awsassets.panda.org/downloads/stepping_up___the_continuing_impact_of_eu_consumption_on_nature_worldwide_execsummary.pdf

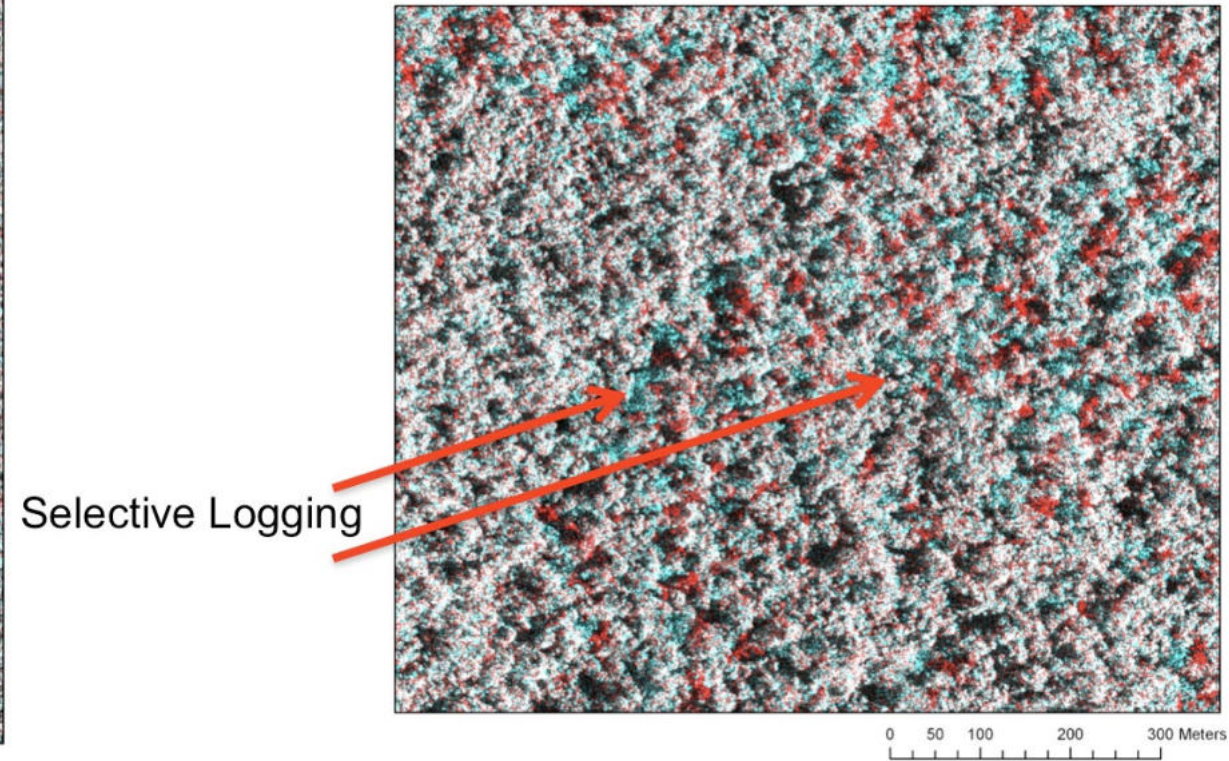
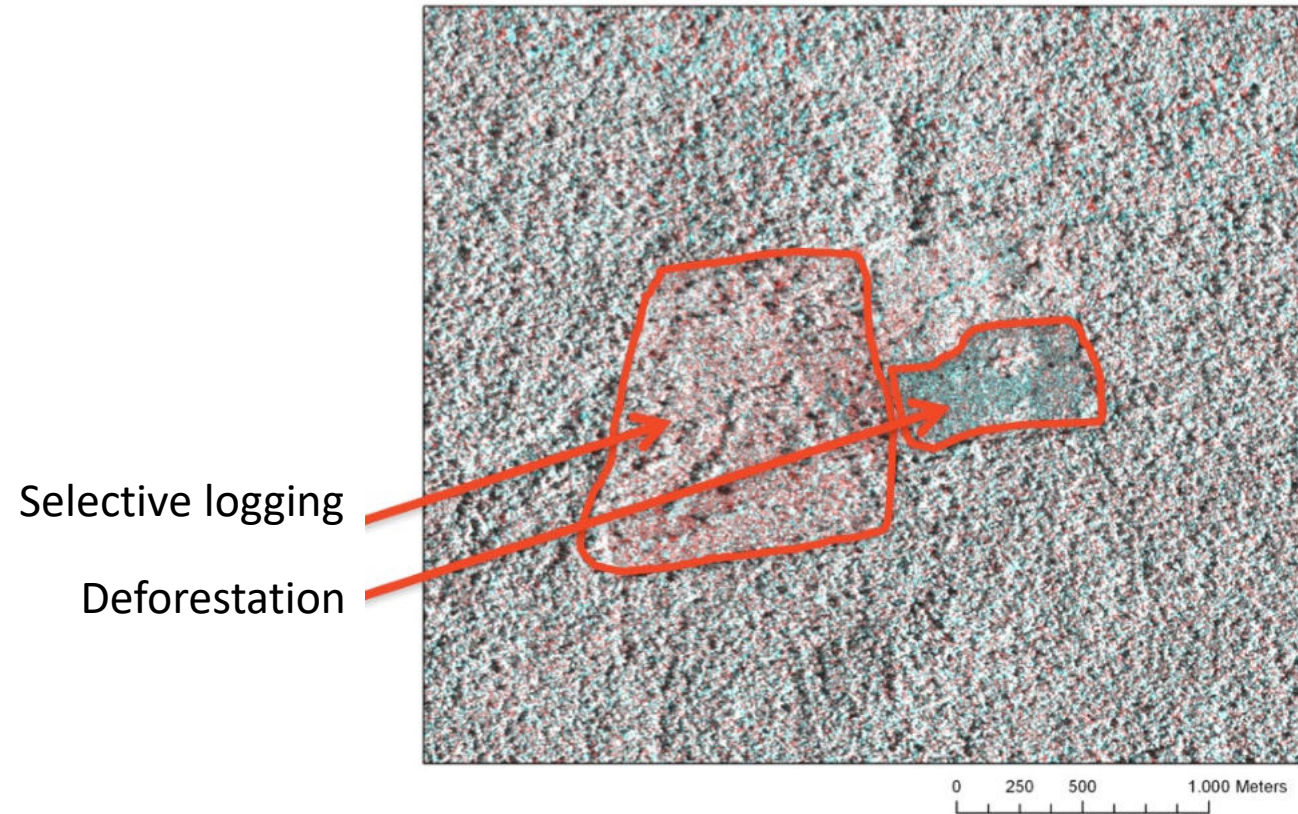
Deforestation-free Supply Chains

Objectives

- Initiatives by business, civil society and associations for deforestation-free supply chains.
- Transparency for consumers
- Support producing countries in building deforestation-free supply chains.
- Coherent and ambitious cooperation at international level.
- Advance a common, goal-oriented approach within the EU.
- Broaden the basis for knowledge-based decision-making.

Source: https://www.bmel.de/SharedDocs/Downloads/DE/_Wald/leitlinien-entwaldungsfreie-lieferketten.pdf?__blob=publicationFile&v=2

EO-based assessment of deforestation and logging





Forest Management

Forest Management Standards



INPUT



PUTPUT

Process 1, Process 2, Process 3, ...



OUTPUT

Process Standard ISO 38200

ISO 38200 Chain of Custody

Certified Material

certified material: verified material received with a certified status and that meets the requirements of a particular certification scheme for which the organization can provide evidence of third-party certification to that scheme

Specified Material

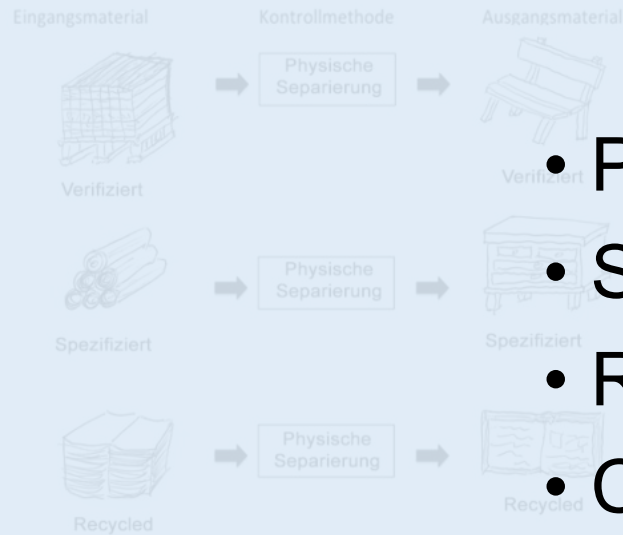
specified material: verified material that meets publicly available documented specific requirements, set by organization(s) within a chain of custody and for which the organization(s) provide(s) information regarding the requirements as well as evidence of compliance

Verified Material

verified material: material for which the organization can provide evidence of compliance with the requirements of the Due Diligence System

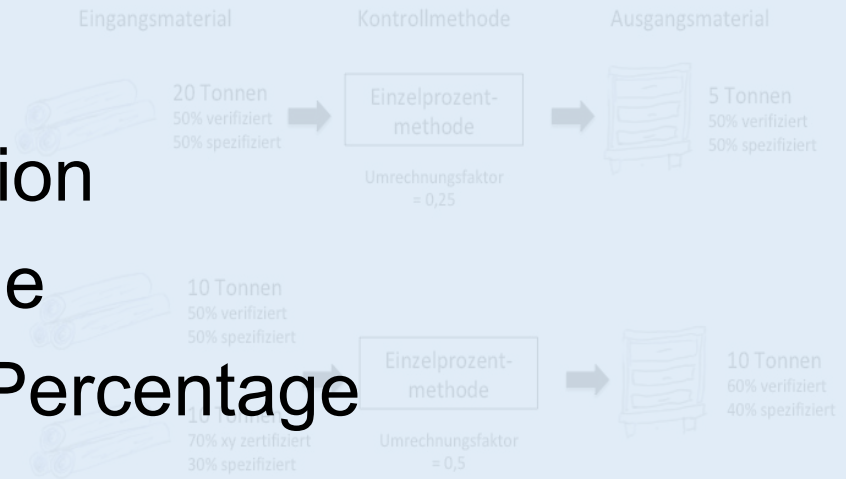
Chain of Custody control methods

Physische Separierung

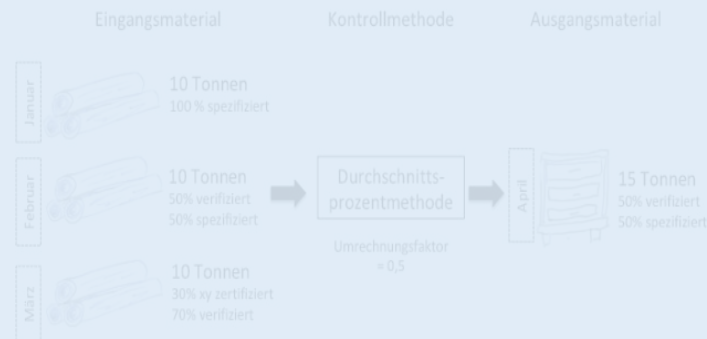


- Physical Separation
- Single Percentage
- Rolling Average Percentage
- Credit

Einzelprozentmethode

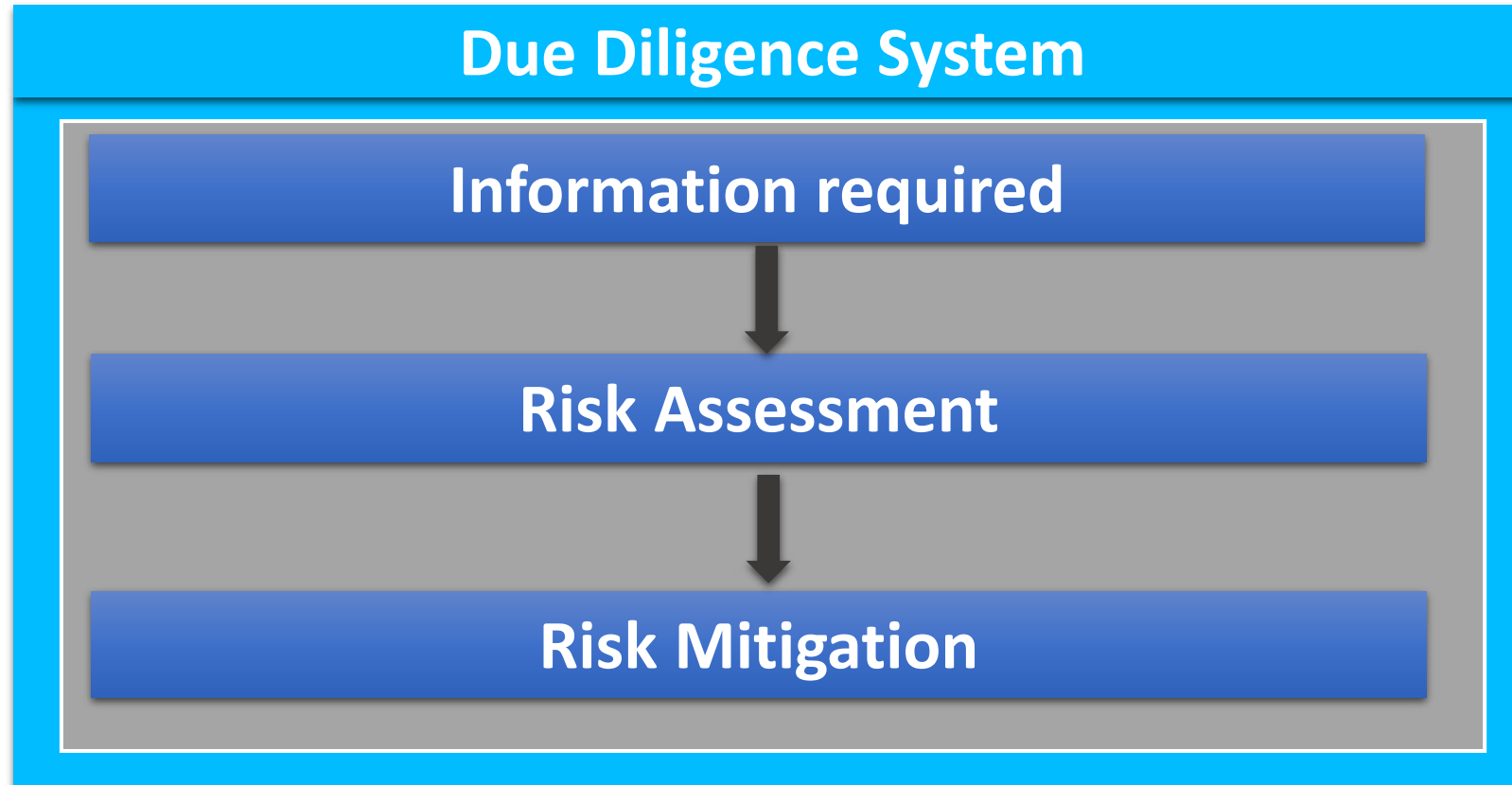


Durchschnittsprozentmethode

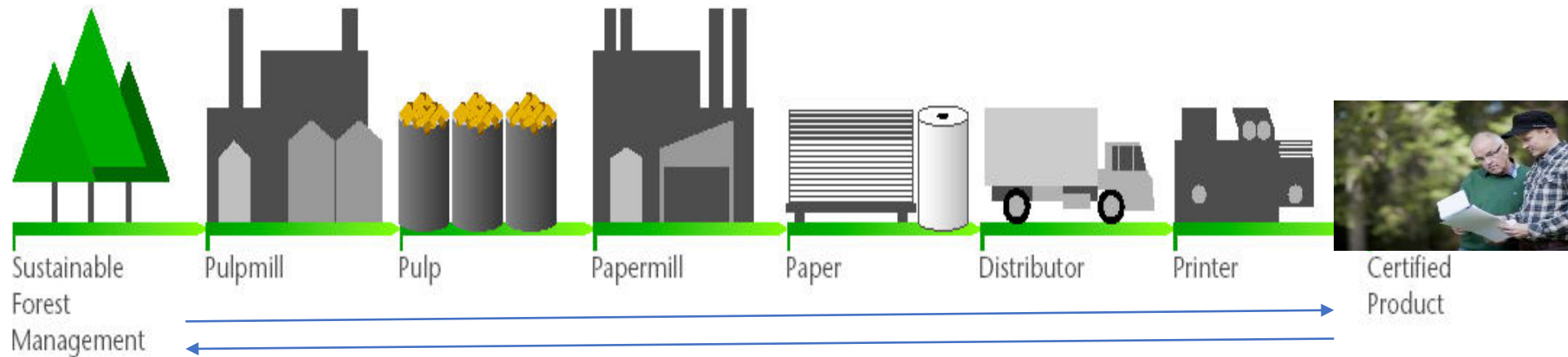
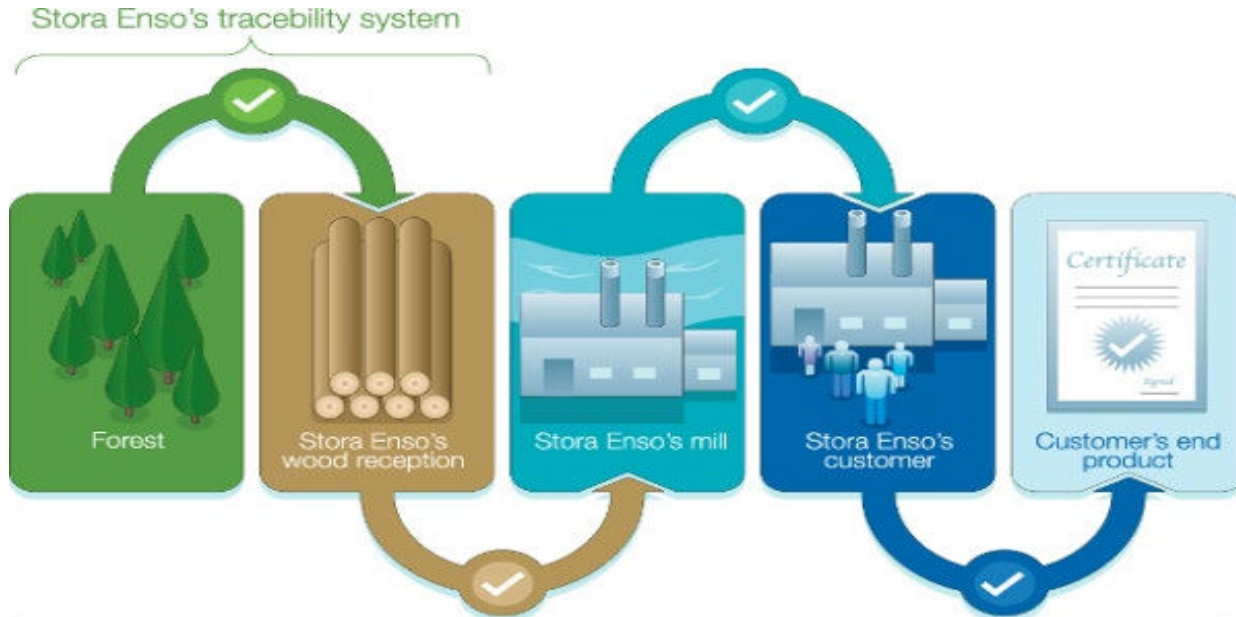


Guthabenkonto





Traceability



ISO 38200: A combination of ISO and Chain of Custody standard elements

ISO Management Standard Elements

Chain of Custody Process Elements

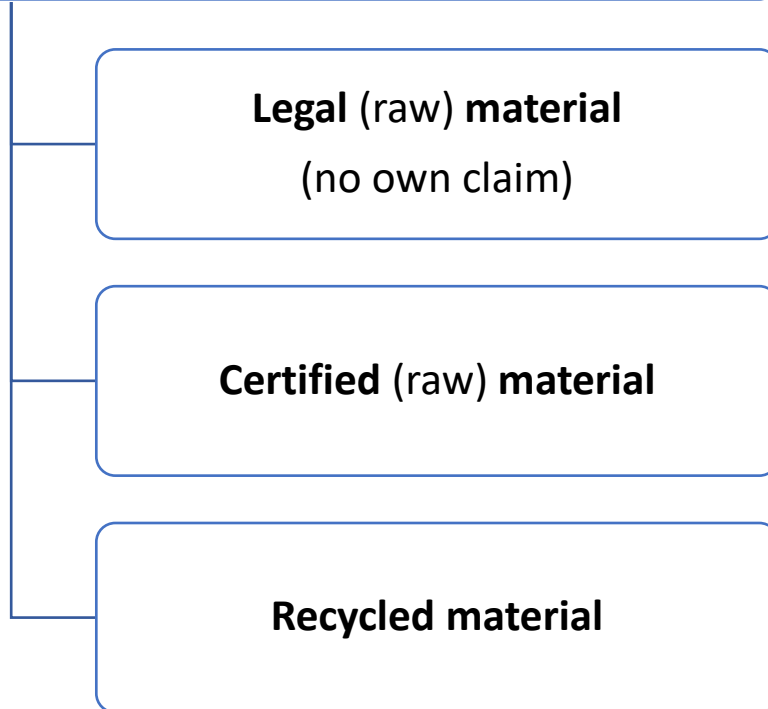
ISO 38200

Easy implementation

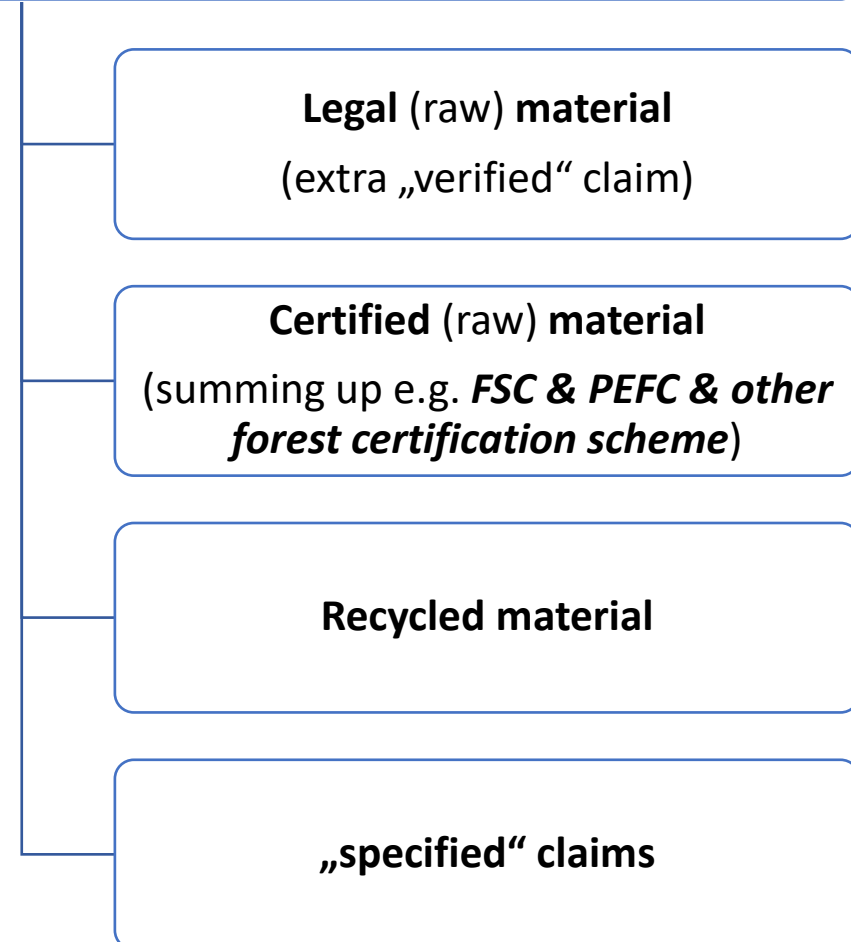
especially for organisations
with ISO Management Standards
e.g. ISO 9001 (Quality) or ISO 14001 (Environment)
and/or
Chain of Custody (e.g. FSC or PEFC)

Claim Categories

FSC/PEFC



ISO 38200



Examples for specified claims

Wood sourced
by regional
wood
purchase

Product
free from
tropical
timber

Wood from
sustainably
managed
forests

Eucalyptus
pulp from
replanted
forests

Wood from
certified
forests

Deforestation-
free
product

Piano wood
cut during a
full moon

Halāl wood

Made of
regional wood
sawn in small
private
sawmills

Increasing interest in ISO 38200

EGGER



VS ist nach ISO 38200 zertifiziert



Thank you very much!

Have a safe trip to your fridge after this online-meeting.

Prof. Dr. Michael Köhl

Universität Hamburg

Institut für Holzwissenschaft - Weltforstwirtschaft & Centrum für Erdsystemforschung und Nachhaltigkeit

michael.koehl@uni-hamburg.de

Marcus Kirschner

Geschäftsführer

Bundesverband Holzpackmittel, Paletten, Exportverpackung (HPE) e.V.

marcus.kirschner@hpe.de

Magnus Deinzer

Sustainability Manager, Stora Enso Paper GmbH

Magnus.deinzer@storaenso.com